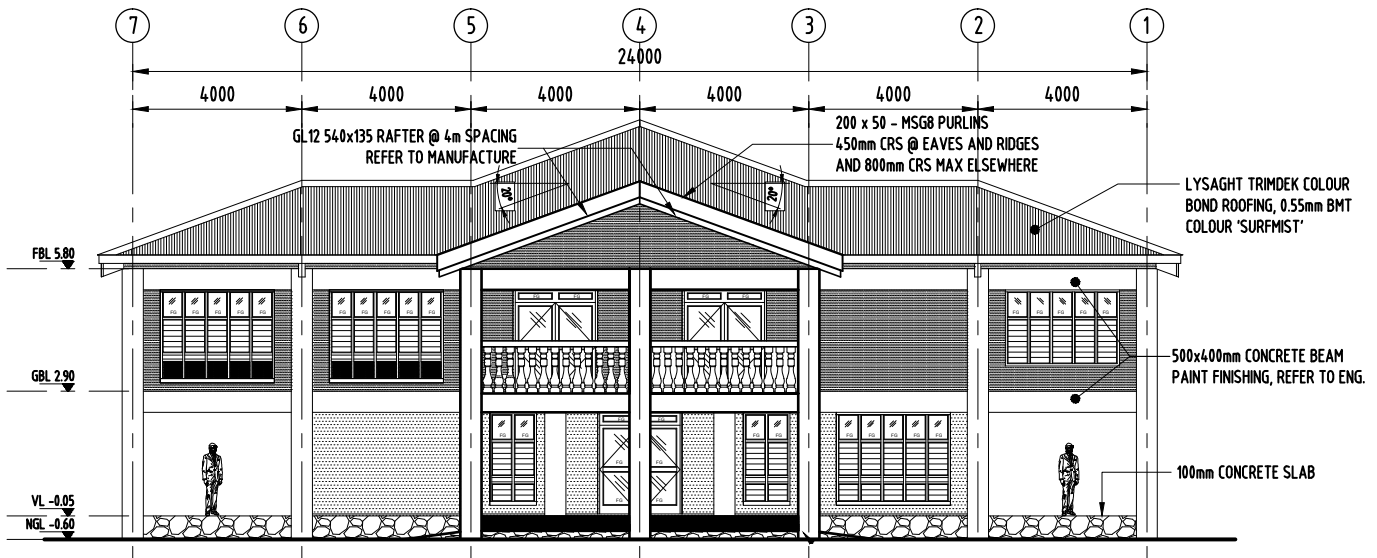


# techTALK

AUTUMN EDITION 2018

ISSUE  
06



*New Hall For Tonga College 'Atele At Ha'ateiho Tongatapu:  
Techlam has been commissioned to design and supply the full roof structure.  
This will be prefabricated and shipped to Tonga for final assembly on site.*

## Autumn Techtalk

The days are getting shorter, the mornings cooler and the leaves are turning orange. 2018 is shaping up to be a biggie here at Techlam with some exciting new projects on the radar.

Via our Techlam Momentum programme we continue to push the boundaries in Lean Manufacturing so we can deliver a high level of efficiency to our clients, and our customer service team is always looking for innovative ways to raise the bar. Thanks for taking the time to read about the latest happenings here at Techlam.

All the best for autumn,  
Brett and the Team.



**Meet Ché**

We welcome Ché Lahmert to the team as our new sales support and admin guru.

Ché is replacing Keryn who has left for Australia after two years at Techlam. We wish Keryn all the best on her new adventure and thank her for her efforts in Techlam. We look forward to making Ché part of our team.



### Our Environment Matters

The well-being of the earth and our people is important to us. We ensure all by-products and adhesives are disposed without impact on the environment. We are also certified to FSC®.

## // Recent projects

Check out some exciting projects both here and overseas that feature our structural laminated timber.

### Tuvalu Airport, Funafuti

Techlam recently carried out construction of a new airport terminal on the island of Tuvalu for an Australian construction company.

The airport project was part of the Pacific Aviation Investment Programme (PAIP) funded by the World Bank. Techlam supplied rafter beams and the roof structure for the new terminal.

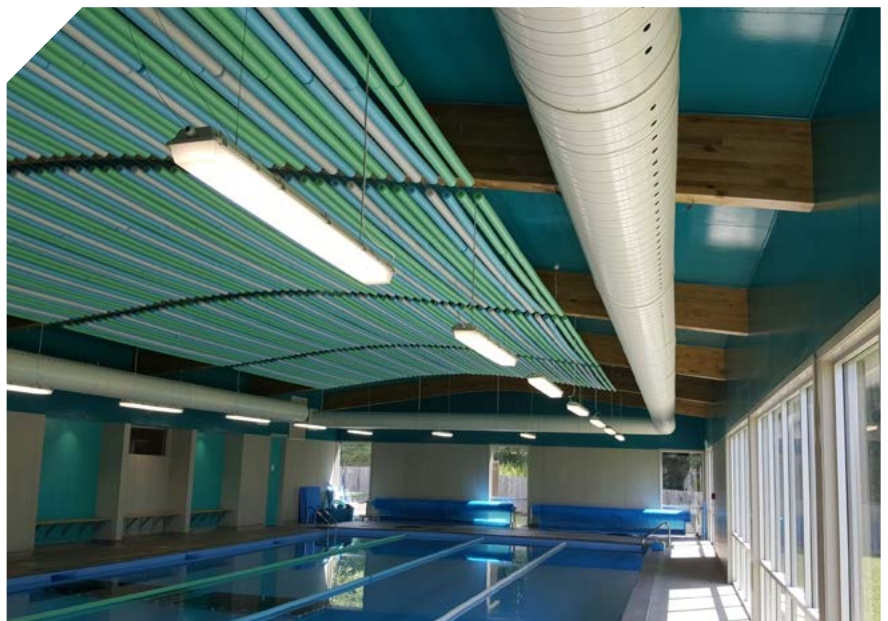
Delivery was a major challenge in this project due to the isolation of the island with shipping lines only servicing the island once a month. Overall it was a challenging project in a challenging location, but by working closely with the project team we managed to deliver the products to the client's satisfaction.



Techlam has just completed supply of an almost identical airport building for Cassidy International Airport, located north of Banana, a settlement on Kiritimati in Kiribati.

### Streamline Swim Academy, New Plymouth

The Swim academy project was a great one to be involved with. This was a 12m cranked rafter 585x180 with an 8 degree pitch spanning the width of the building sitting on 180x135 glulam columns that were mostly hidden in the wall. Techlam supplied the beams through Timberco in New Plymouth. We went to the site a number of times and interacted with the builders installing the cranked rafters. The beams ended up being coated with a clear polyurethane which brought out the natural grain and looked amazing. This will also keep the beams protected for a long period of time in the harsh aquatic environment.





## Island Bay Residence, Wellington

A project recently completed on The Esplanade, Island Bay was an interesting one to be involved in.

We worked with Richard from Novak+Middleton Architects and Mike from Wilson Builders to ensure an end result that everyone was happy with. The beams were manufactured at our factory in Levin, before being detailed by our skilled team of carpenters and sent to site with all holes and slots completed ready to assemble. Mike and his team then stood the portal legs and first floor beams, followed by level 2 columns and roof beams. The finished product was coated with Wood-X penetrating oil, giving the Glulam beams an amazing silvery look almost like weathered driftwood, making the house look at one with the beachfront scene.



## // Product feature: Sprucelam® Trusses

**Sprucelam® is an aesthetically pleasing, high strength laminated interior product.**

The product has a lovely natural visual appearance which meets appropriate NZ Standards, is dimensionally stable, is price competitive and environmentally certified. These recent trusses were manufactured using Sprucelam® and you have to agree, they look stunning!



## // Industry News

### CoLab 2018

We recently attended the Colab 2018 conference at AUT in Auckland.

This was an exemplary two days – all about increasing construction productivity through innovative prefab and offsite manufacture processes. Also discussed was how we can work together to advance the use of prefabrication to meet current housing policy and private building demand. This event was attended by many professionals from NZ and AU and the networking was priceless.

Among many other industry specific discussions, we discussed the following:

- Exposure to international offsite policy and relevant industry response
- Information on advanced prefabrication technology, systems and uptake
- Sharing issues, challenges and lessons learnt for the sector
- Connecting to people in the know and creating collaboration opportunities
- Being part of the innovative and burgeoning design and construction industry



- Being at the forefront of modern methods of productivity and sustainability

This was excellent time spent and re-emphasised for us the importance of networking and keeping close to the NZ timber industry.

Further details can be found here: [www.prefabnz.com/Events/CoLab2018](http://www.prefabnz.com/Events/CoLab2018)

### Review of Standards 3640 & 3602

Draft revisions of NZ3640 & 3602 have been released for review and Techlam has been involved with various industry bodies to provide submissions and ensure standards are fit for purpose.