

techTALK

SPRING EDITION 2020

ISSUE
16



The glulam roof at the Kerikeri Childcare centre is looking great, D Lenssen Construction are doing a great job.

Spring Techtalk

Winter is almost gone and the fresh feel of spring is in the air...

In this issue of Techtalk:

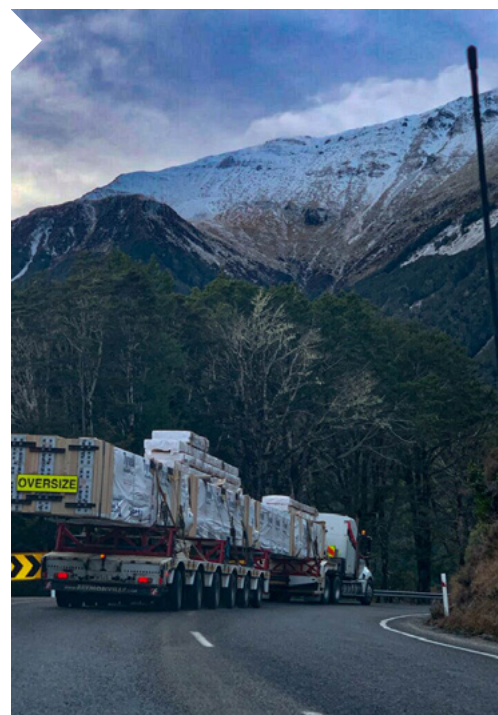
- Highlights from our team day
- Project updates
- Technical News
- Our Environmental Product Declaration
- New team members

Warm regards,
Brett and the Team.

// Snapped in Action

This image of an oversize Glulam load heading south is amazing. These beams are now on site at the Selwyn Aquatic Centre in Christchurch- See page 2.

This picture was taken from one of the pilot vehicles.



// Current Projects

Hornby Working Mens Club

Looking great in the Christchurch sunset!

We supplied the prefabricated truss, portals and rafters to the Hornby Working Mens Club in Christchurch. This project has come together perfectly. We can't wait until it's done!



Selwyn Aquatic Centre

There's some great progress being made on the Selwyn Aquatic Centre

These glulam components were prefabricated in our plant and shipped to site pre coated with wood stain and right ready to be put together. It's great to see them coming together seamlessly on site.

The largest beams are 30 metres long and 1305x280mm in dimension. The timber is GL12 strength grade with an H3.2 treatment. Each weighing 6500kg.

2 oversize loads were shipped to site by Main Road Trading who did a great job.





Kerikeri Childcare Centre

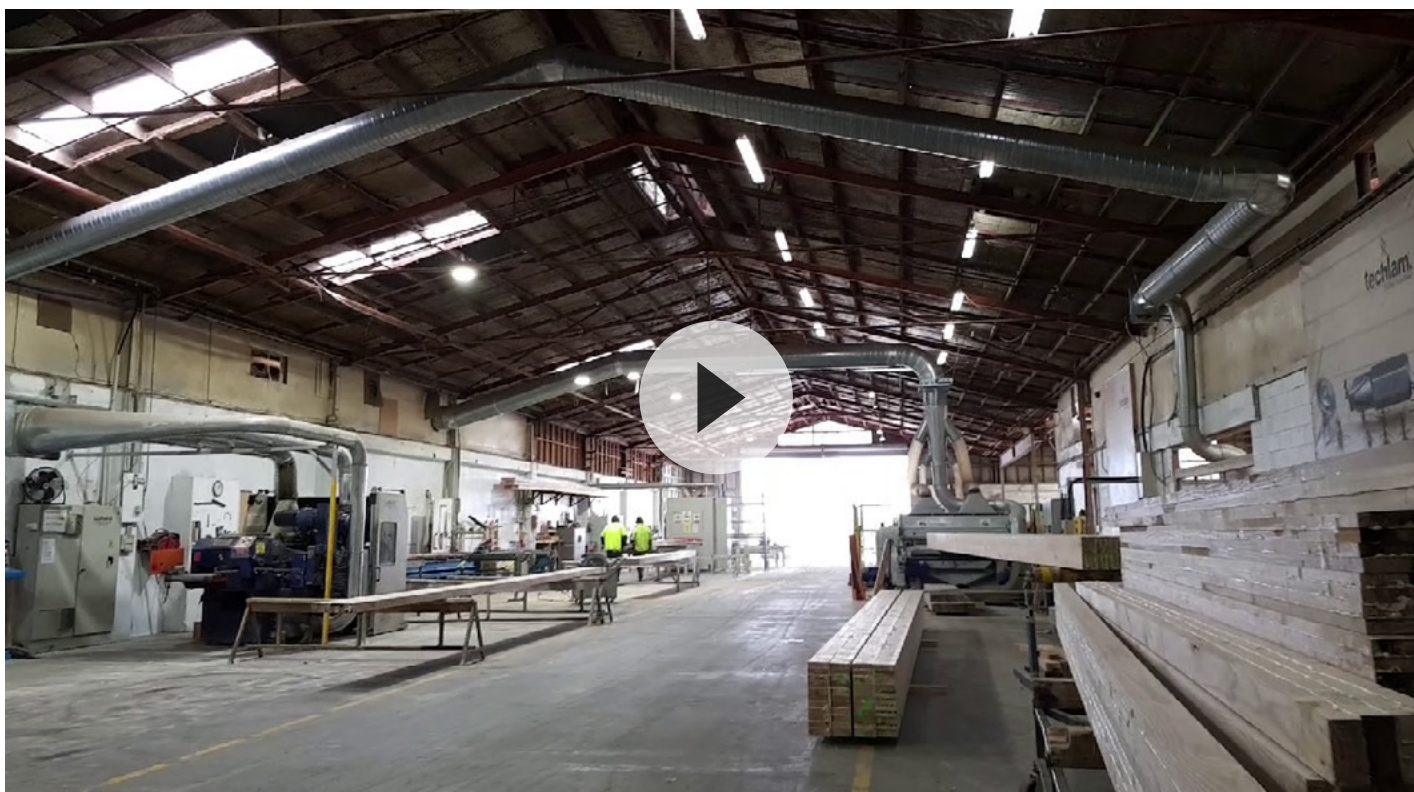
New Shoots Kerikeri is well on the way to completion

Techlam supplied the glulam roof components for this project. It was great to be involved early on in this project along with Collingridge and Smith Architects and D Lenssen Builders.

// Our Process Video

Over the last few months we've spent some time in the plant to collate all the processes that we follow to manufacture Techlam Glulam. Take a look at the final video!

This video is a brief look into what we do at Techlam, and how our Glulamined timber products transform from raw timber feedstock to the finished glulam you can see in many of our projects around Australasia.





// Technical

Bureau Veritas Certification

We've recently re certified under the 'S' Mark Certification Programme

Techlam now complies with the Bureau Veritas 'S' Mark Certification Programme and is audited regularly to ensure continuing compliance to Standards AS/NZS 1328.1:1998 - Glued laminated structural timber & AS 5068:2006 - Finger Joints in structural products.

The Mission of Bureau Veritas is to reduce their clients' risks, improve their performance and help them innovate to meet the challenges of quality, health & safety, environmental protection and social responsibility.

Techlam are dedicated to continually meet these standards to ensure high quality products are delivered, meeting the needs of our clients.



'S' Mark Licence Numbers

- AS/NZS 1328.1:1998 Licence no: 2929

- AS 5068:2006 Licence No: 2930



Environmental Product Declaration

Techlam Glulam products have an Environmental Product Declaration!

Along with other contributors, an industry wide EPD has been published.

This industry average EPD was compiled from data from participating members of the Wood Processors and Manufacturers Association of New Zealand. It covers cradle to gate and end of life options for, kiln dried sawn timber, kiln dried surfaced timber, finger-jointed timber, glue laminated timber and cross laminated timber all made from sustainably managed New Zealand radiata pine.

It's great to be able to see the impacts of our products to ensure Techlam Glulam is playing it's part and doing the best for the Environment.

As a responsible manufacturer, we're dedicated to protecting human health, natural resources and the environment.

EPD registration number: S-P-00997

Approval date: 01-10-2019

Valid until: 01-10-2024

Geographical scope: New Zealand

View it [HERE](#)

// Team Day

Recently we took an afternoon to celebrate our team. It's been a challenging year with everything that's been going on, but our team thrives on the challenges.

We wanted to give them thanks for their efforts so we spent an afternoon at Heights Experience, involving lots of activities like Clay Bird Shooting, Archery, Axe Throwing and Can-am Maverick Rides. These were followed by a huge feed to finish off the day.

A huge thanks to Heights Experience for the awesome venue too - check out their website [HERE](#).



// Techlam News

Techlam Anniversaries

We've had a few Techlamiversaries over the last few months!

Congratulations to all who have recently celebrated one or more years with us. We're grateful to have you on our team & we'd truly be lost without you.



Jose our BIM/CAD Technician also celebrated 3 years on the Techlam Team, Jose is involved in the modelling for our project work and does an awesome job. Congratulations Jose!



Shaun our North Island Account Manager celebrated 3 years with us. Shaun is a valued member of the Sales team and provides our customers with great support. Here's to many more years Shaun!



Redhu Celebrated his first anniversary at Techlam in June. The work Redhu does for our BIM/CAD modelling is awesome and ensures our plans are 100% accurate. We're glad to have Redhu on our team.



Karl has recently celebrated one year with us too. Karl is a great addition to the team. He helps streamline our NetSuite System and fixes all our IT issues. Congratulations on 1 year with us Karl!



Jude celebrated her second Techlam Anniversary. Jude is our Finance Administrator and a huge asset to the team. She has recently taken over a huge part of the financial management. Congratulations Jude!



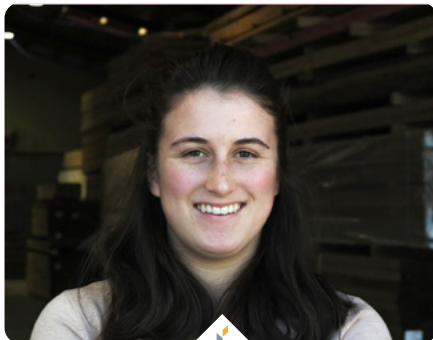
Mainfreight Visit

Some of our team went to check out the new Mainfreight depot located here in Levin.

The new depot is a great addition to the region. It will shorten our freight times with more direct routes to Auckland and Christchurch. Hopefully you start to see the benefits soon!

Welcome to the Team

We have three new Techlam Team members!



Skye has joined us to assist with general admin tasks and help the sales team wherever needed. Skye is enthusiastic and always ready to learn. She is starting to deal with our customers to ensure their requests are met quickly.



Leigh is our Team Leader for Finishing, he has a background in the timber industry, His extensive knowledge about timber helps us to deliver on our promises. Leigh ensures all our products go out the door at a high quality and on time.



Dion joins us as the Glue Press Team Leader. With a Military and Processing background, understanding and implementing processes and procedures is Dion's strength; with a focus on trend analysis and RCA when challenges arise.