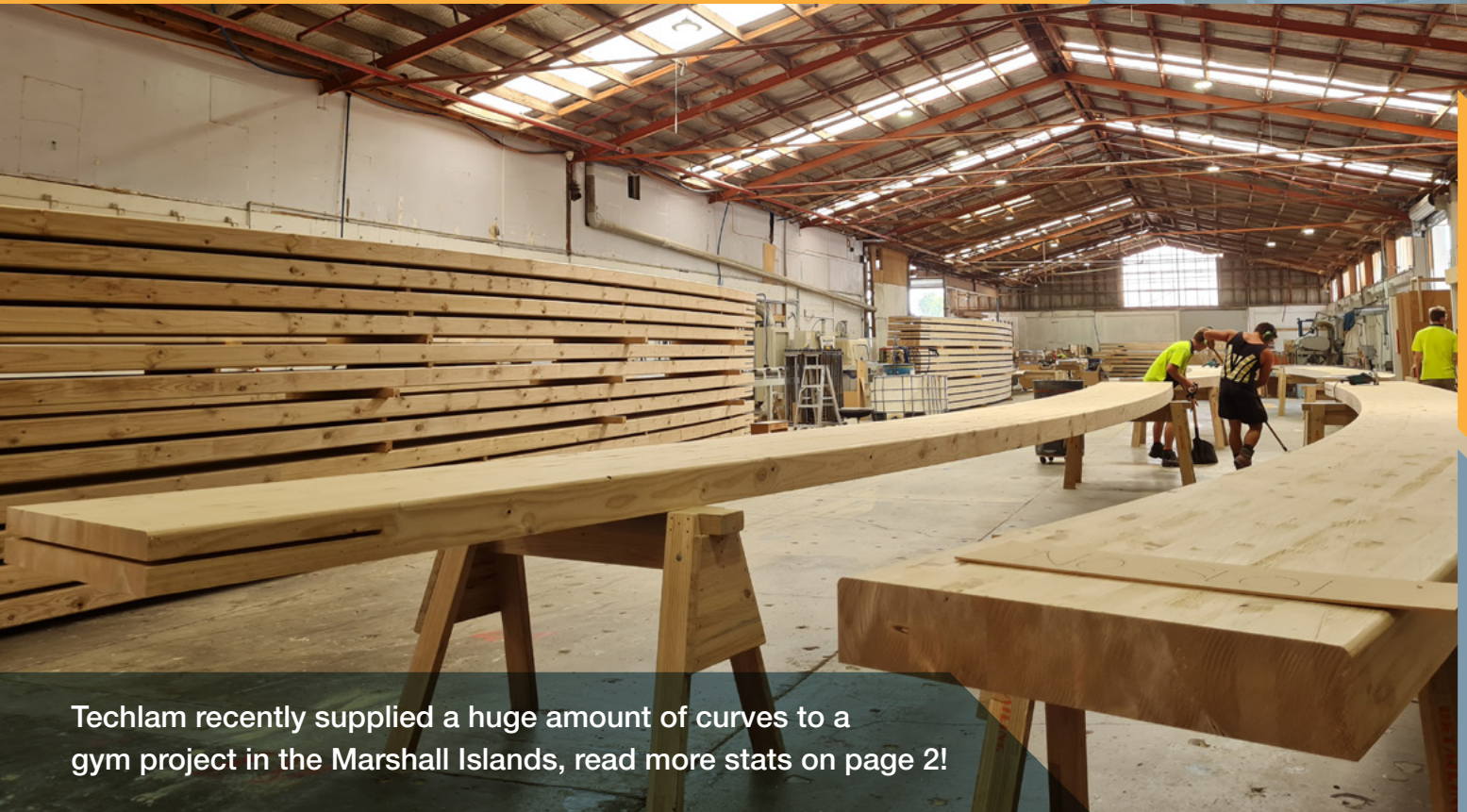


techTALK

ISSUE
19

WINTER EDITION 2021



Techlam recently supplied a huge amount of curves to a gym project in the Marshall Islands, read more stats on page 2!

Winter Techtalk

Well, it's definitely Winter. But things aren't cooling down here, We're only getting busier!

In this issue of Techtalk:

- Our glulam training module
- New staff members
- Project updates from around the country
- Our environmental impact
- Techlam Anniversaries

Enjoy!

The Techlam Team

// A note from our MD

Hi All, The markets continue to be very strong, with the timber supply issues being very dominant in everyone's minds. We work closely with our suppliers, and we still proudly offer the fastest average lead times to our valued customers across NZ and offshore. We have many exciting projects happening across the country, and several projects recently completed and exported.

Have a read of our latest edition of TechTALK, and get up to date with what's been happening over the last few months here at Techlam.

Regards,

Brett Hamilton



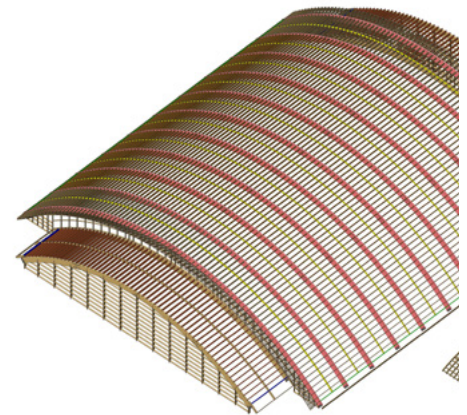
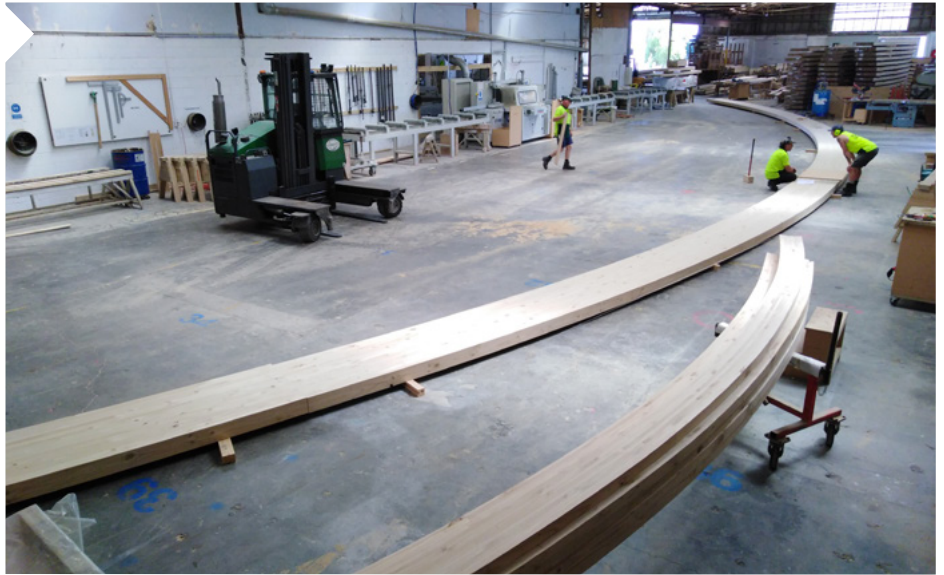
// Current Projects

ECC Gym

These curved beams will result in a 45 metre clear span!

Recently we've manufactured glulam for a 45m clear span gymnasium over in Majuro. The ECC Gymnasium is one of the major sports and recreational facilities in the Republic of the Marshall Islands. A timber roof was the best solution for this project, being lightweight and able to span the large dimensions of the structure.

We can't wait until these beams are assembled on site. We'll have more updates for you once they are.



Te Wharekura O Rakaumanganga

Yet another awesome prefabricated project.

This school project in Huntly features some great prefab work by the Techlam team. A nice use of timber elements that will bring a biophilic design element to the project. A perfect choice for a learning environment.

Selwyn Aquatic Centre

We have another pool project completed.

The Selwyn Aquatic Centre has recently opened and features prefabricated glulam beams that span 29m! These beams left us ready to be assembled on site with hardware supplied by us too.



St Pauls Restaurant & Hall

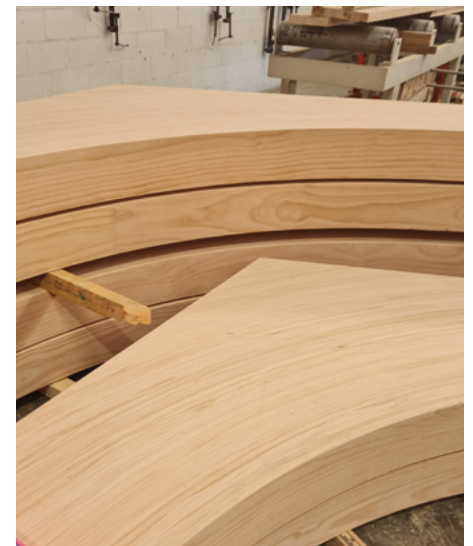
Check out the view!

The St Pauls Restaurant and Hall is looking great so far. The views from this spot are amazing - a nice outlook to Kaikoura Beach. This project will be used for all sorts of events and social activities once completed.

Kaikohe Marae

This is our 2nd Marae project this year!

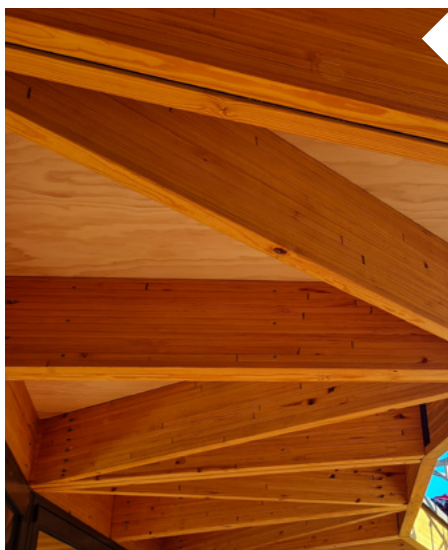
Techlam is currently working on some large portals that will be heading to Kaikohe for a new Whareniui. These portals are coming together nicely in the factory and it's awesome to see the teamwork involved in getting them spot on. We're looking forward to seeing them go up on site.



Commercial Project Award!

We're proud to have supplied product to this award winning project.

The Te Raekura Redcliffs School recently won a Gold Award, Value Award, National Category Winner & Supreme Winner in the 2021 Commercial Project Awards. Congrats to all who were involved!



Kakapo Creek Childcare Centre

A new childcare centre is soon to open in Mairangi Bay.

This stunning childcare centre is all about connectivity, the circular shape creates a village-like atmosphere. The round disc shaped roof featuring kitset glulam components is currently having a green roof planted to bring it to life. Great work to all involved in this project, it will be awesome to see this structure complete.

"Thank you Techlam for your expertise and advice without which I think we would still be chasing tails."

- Kaye McKean, Director, Kakapo Creek Children's Garden

// Techlam News

Glulam Training Module

Have you used it yet?

We've recently released our first online Glulam Training Module. This was a long time in the making and it's exciting to finally be able to share it. We'd love to help you be able to use glulam more effectively and with this module you can learn what, where, when and how to use glulam in your designs.

Check it out [HERE](#).



THIS IS TO CERTIFY THAT

YOUR NAME

COMPLETED THE GLULAM TRAINING MODULE

WITH A SCORE OF

START NOW!



THIS COURSE COUNTS TOWARDS LBP POINTS

1m ³ Radiata Pine Glulam – H1.2 Boron	
ENVIRONMENTAL IMPACT	TOTAL*
Climate Change-Fossil (net) [kg CO ₂ -eq.]	144.00
Climate Change-Biogenic (net) [kg CO ₂ -eq.]	-803.9 [†]
Ozone Hole [kg CFC11-eq.]	0.0
Acid Rain [kg SO ₂ -eq.]	0.8
Algal Blooms [kg PO43--eq.]	0.2
Smog Forming [kg C ₂ H ₄ -eq.]	0.5
Mineral Resources [kg Sb-eq.]	0.0
Fossil Energy Resources [MJ]	2052.9

Table 1: Environmental impact data for production of 1m³ of New Zealand Radiata Pine Glulam treated to H1.2 with Boron-based preservative and redried after treatment. Source: EPD S-P-00997.

1m ³ Radiata Pine Glulam – H3.2 [#] CCA	
ENVIRONMENTAL IMPACT	TOTAL*
Climate Change - Fossil (net) [kg CO ₂ -eq.]	164.0
Climate Change - Biogenic (net) [kg CO ₂ -eq.]	-803.4 [†]
Ozone Hole [kg CFC11-eq.]	0.0
Acid Rain [kg SO ₂ -eq.]	1.1
Algal Blooms [kg PO43--eq.]	0.2
Smog Forming [kg C ₂ H ₄ -eq.]	0.5
Mineral Resources [kg Sb-eq.]	0.0
Fossil Energy Resources [MJ]	2301.8

Table 2: Environmental impact data for production of 1m³ of Radiata Pine Glulam treated to H3.2 with CCA preservative and redried after treatment. Source: EPD S-P-00997.

* Total includes industry average data for life cycle stages A1-A3 (production including preservation). Actual impact data will vary from producer to producer. Information on data variability and impacts of end-of-life stages is available in the WPMA EPD S-P-00997. Techlam's specific product impacts will be within the range cited in the EPD.

[†]Biogenic carbon may be released at end-of-life and/or passed on to the next product system. If this data is used to compare products, biogenic carbon will need to be reported separately.

[#]H3 data is presented as a proxy for H3.2 preservative treated timber. H3.2 uses less preservative treatment than H3, therefore this is a conservative assumption.

Our Environmental Credentials

Our new tell-all document.

Techlam's accurate and informative credentials Document is finally completed. This document shows the environmental figures in a 'nutrition label' form, making it easy for you to see exactly what the environmental impact of your glulam project is. It includes information on how you can meet relevant environmental standards.

Read it [HERE](#)

Join the team?

We have a spot open for an Administrator/IT position.

Get in touch if you are interested. email your CV to

hr@techlam.co.nz

or read more about the role [HERE](#).

We look forward to hearing from you!



EBOSS Specified

Lots of interesting speeches and insights were shared last week at EBOSS Specified. Overall, a fantastic event that taught us a lot about what drives product specification. It was great to be there.



Welcome

Alistair Kirkland joined the team as our South Island based Account & Business Development Manager. Exciting!



Techlamiversaries

Let's celebrate our staff.

In the last few months we've celebrated 6 of our staff's work anniversaries. Some who have been here for 8 years, and still going strong. Here's to many more years working with awesome guys like you!