

# techTALK

SPRING EDITION 2021

ISSUE  
20



The New Plymouth Airport is up for Prix Versailles International Architecture & Design Awards!

## Spring Techtalk

Spring is here and we're looking forward to longer, finer days.

In this issue:

- New technical 'cheat sheet'
- Fresh to team techlam
- Project updates
- Techlam events
- Upskill in LEVEL 3

Keep Safe and Enjoy!

## // A word from the boss

As this Techtalk goes live, we're just emerging from two weeks of full lockdown and have just started up production under strict Level 3 protocols. It's been challenging for us all, and our thoughts and sympathy are with people and businesses in Auckland and Northland as they remain in Level 4 for a couple more weeks.

Techlam is busier than ever with a vast array of different projects across NZ and further afield. Our sales and customer support teams are working hard to maintain a high level of customer satisfaction.

As production was shut down for two weeks, please be patient with us as we reschedule and plan all orders in the system - we're in catch-up mode and are committed to keeping our lead times the fastest in our industry.

Please read on, and see what we've been up to lately.

Most importantly stay safe out there!

Cheers,

Brett Hamilton MD

## // Current Projects

### Mintaro Hut

A backcountry hut, located in the Milford region.

Techlam's structural engineers and experienced project team developed a timber portal design to meet the extreme demands of the site and location. These portals were fully prefabricated at Techlam's manufacturing facility in Levin and shipped direct to the staging zone - ready to be flown to the site. This made it easier for the on-site team to erect the structure quickly and efficiently.



### Te Rau Karamu Marae

It was an honour to build these premium totara beams for the Marae.

The native timber was the perfect fit for this project. Techlam totara glulam provided a smooth, quality surface for the traditional carvings and with all the connections hidden, it's a seamless result.

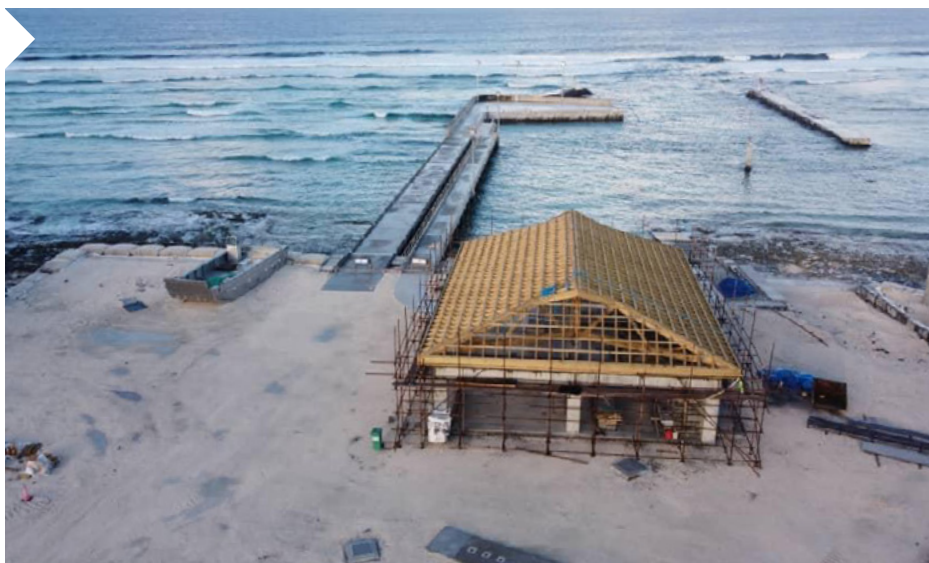
This project is a finalist in the Designers Institute of New Zealand Best Awards 2021.

Read more about the project [here](#).

## Tuvalu Warehouse

Another Techlam durable roof structure is up.

This project involved two identical structures on the island of Tuvalu. The logistics were a challenge, but all product is on site and has gone together smoothly. Corrosion-free glulam was the right solution for this seaside location.



## Addington Chalet

Some nice South Island views from this one.

The pitched roof on this chalet is impressive. Our glulam products were prefabricated offsite and are fitting with the other engineered timber products nicely. The final project will be a stunning getaway surrounded by some cool South Island scenery.

## Huntly School

The Te Wharekura O Rakaumangamanga School has gone together quickly.

Some awesome connections feature in the portals for the new Huntly School classroom block. This will provide 6 new classrooms for the school.



## Te Rapa Pool

Featuring 22m Techlam Glulam rafter beams.

Well on the way to completion, this project will look amazing once finished. The team from Fosters Construction have been awesome to work with and they're progressing well onsite.

Watch this space!



## Te Hono, New Plymouth Airport

New Plymouth Airport has been selected as a finalist for the prestigious Prix Versailles International Architecture & Design Awards.

Techlam provided the unique cigar shaped columns for the airport interior. These columns add warmth to the space and fit well with the rest of the interior.

Kudos to all involved - Beca Design Practise, Clelands Construction, Techlam and many more who brought this project to life.

Read more about the awards and design process [here](#).



## // Techlam News

### EBOSS Events

As always, it's great to be part of these TechEd events.

This time in Wellington, EBOSS hosted two events. Techlam enjoyed some innovative conversations with the teams at Somerset Group and Design Group Stapleton Elliot. It was a pleasure to share our knowledge with these talented design professionals.



### Training Module

Upskill in Level 3!

Try out our online Glulam Training Module. This course will give you a great insight into our engineered timber products and how you can use them effectively. You'll even get a course certificate! See it [here](#).



### We're Hiring

Looking for a new opportunity?

Check out our latest job listing [here](#). We are looking for a full-time Customer Service and Sales Support specialist to work closely with our Sales Team.



### WoodWorks 21

We're looking forward to WoodWorks this year.

The Annual WoodWorks conference held in Rotorua has now changed dates to the 2<sup>nd</sup> and 3<sup>rd</sup> of November. We'd love to see you there.

### Cheat Sheet

Our new document is available [here](#).

We have released a glulam cheat sheet. This will help answer any simple and frequently asked questions that you might have.

## // Staff Updates



### Welcome Fiona

A warm welcome to Fiona Henwood, who has started in our Admin/IT Department. She has already made a huge difference.

### Farewell Luke

Luke has left us after nearly 8 years. He's been a huge asset to the team and will be missed.

All the best Luke!



## Techlamiversaries

We've celebrated many anniversaries in the last 3 months. Ranging from 1 year to an impressive 17 years with Techlam. Congratulations to you all, we really appreciate all you do for us, we have an awesome team!

